



DUCA RHOMB o10

Padded faux-leather with decorative diamond quilting;
suitable as upholstery fabric

Collection:	Duca
Material:	Oberstoff Face Fabric : 100 % PU Füllung Filling: 70 % PES 30 % CO Futter Lining: 70 % PES 30 % CO
Color variations:	10
Total width:	138,00 cm
Rapport width:	6,50 cm
Rapport height:	6,50 cm

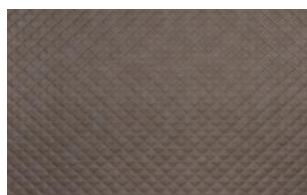
Usage:



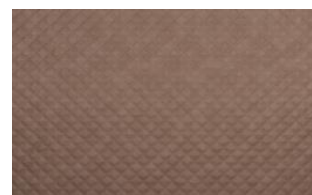
Care instructions:



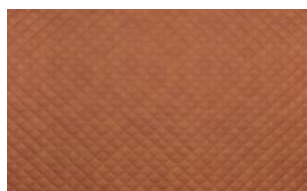
Available colours:



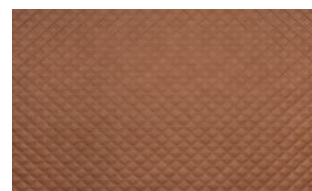
Duca Rhomb o41



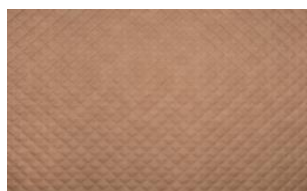
Duca Rhomb o42



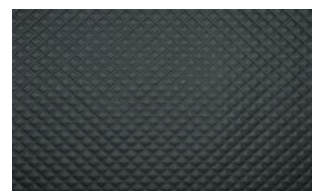
Duca Rhomb o44



Duca Rhomb o45



Duca Rhomb o46



Duca Rhomb o70

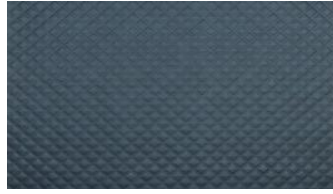
fine



Duca Rhomb 071



Duca Rhomb 072



Duca Rhomb 080