

## FINESSE 020

Velours, padded and quilted in a cable stitch, colour gradient by means of spray dye, hard-wearing; suitable as upholstery fabric

|                   |  |
|-------------------|--|
| Collection:       | Frida  |
| Material:         | Oberstoff   Face Fabric : 100 % CV<br>Füllung   Filling: 100 % PES<br>Futter   Lining: 100 % PES |
| Color variations: | 4  |
| Total width:      | 131,00 cm  |
| Rapport width:    | 5,00 cm  |
| Rapport height:   | 4,50 cm  |

Usage:



Care instructions:



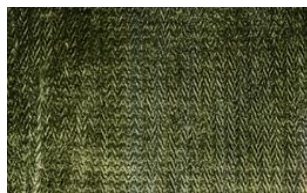
Special notes:

A seat mirror in pile or pile fabrics is purely visual and is not a reason for complaint.

Oekotex Standard 100 certified

The Article is "spray dyed" (i.e. using color sprays). The desired effect is an irregular repeat.

Available colours:



Finesse 030



Finesse 050



Finesse 081