

# LILY 071

In - Outdoor upholstery fabric, woven in a two-coloured diamond pattern with a raised texture and a woolly feel

Collection:	Sunday In- & Outdoor
Material:	100 % PP
Color variations:	7
Total width:	142.00 cm
Usable width:	140.00 cm
Rapport width:	1,5 cm
Rapport height:	2,2 cm

Usage:



Mark:  
Washable  
Stain protection  
Outdoor

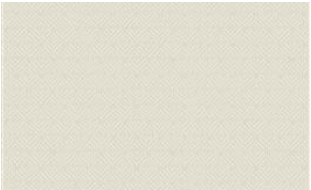
Care instructions:



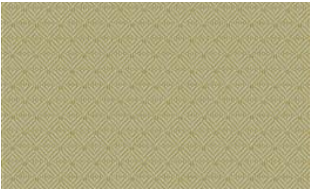
Available colours:



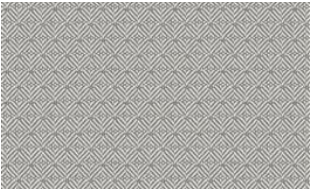
Lily 010



Lily 011



Lily 030



Lily 070



Lily 087



Lily 088

Special notes:  
water repellent  
Oekotex 100 certified  
mildew resistant  
UV resistant  
high lightfastness  
odour resistant  
anti-bacterial | microbial  
\*Fibre Guard Outdoor  
anti-microbial

---

The illustrations are not color-coded.