



MADITA 011

Upholstery fabric, woven from a bouclé yarn as a two-tone houndstooth

| | |
|-------------------|--|
| Collection: | Rica |
| Material: | 28 % WV 28 % PAN 16 % PES 12 % CV 10 % CO 6 % LI |
| Color variations: | 11 |
| Total width: | 140,00 cm |
| Rapport width: | 1,40 cm |
| Rapport height: | 1,50 cm |

Usage:



Care instructions:



Available colours:



Madita 010



Madita 012



Madita 020



Madita 030



Madita 031

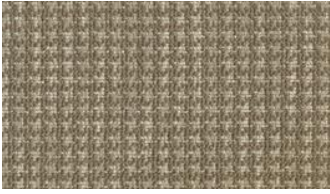


Madita 040

Special notes:
Minimum order quantity 1 meter

The illustrations are not color-coded.

fine



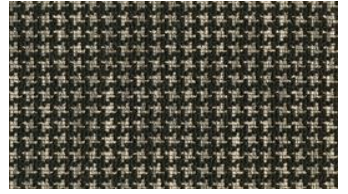
Madita 041



Madita 070



Madita 071



Madita 072