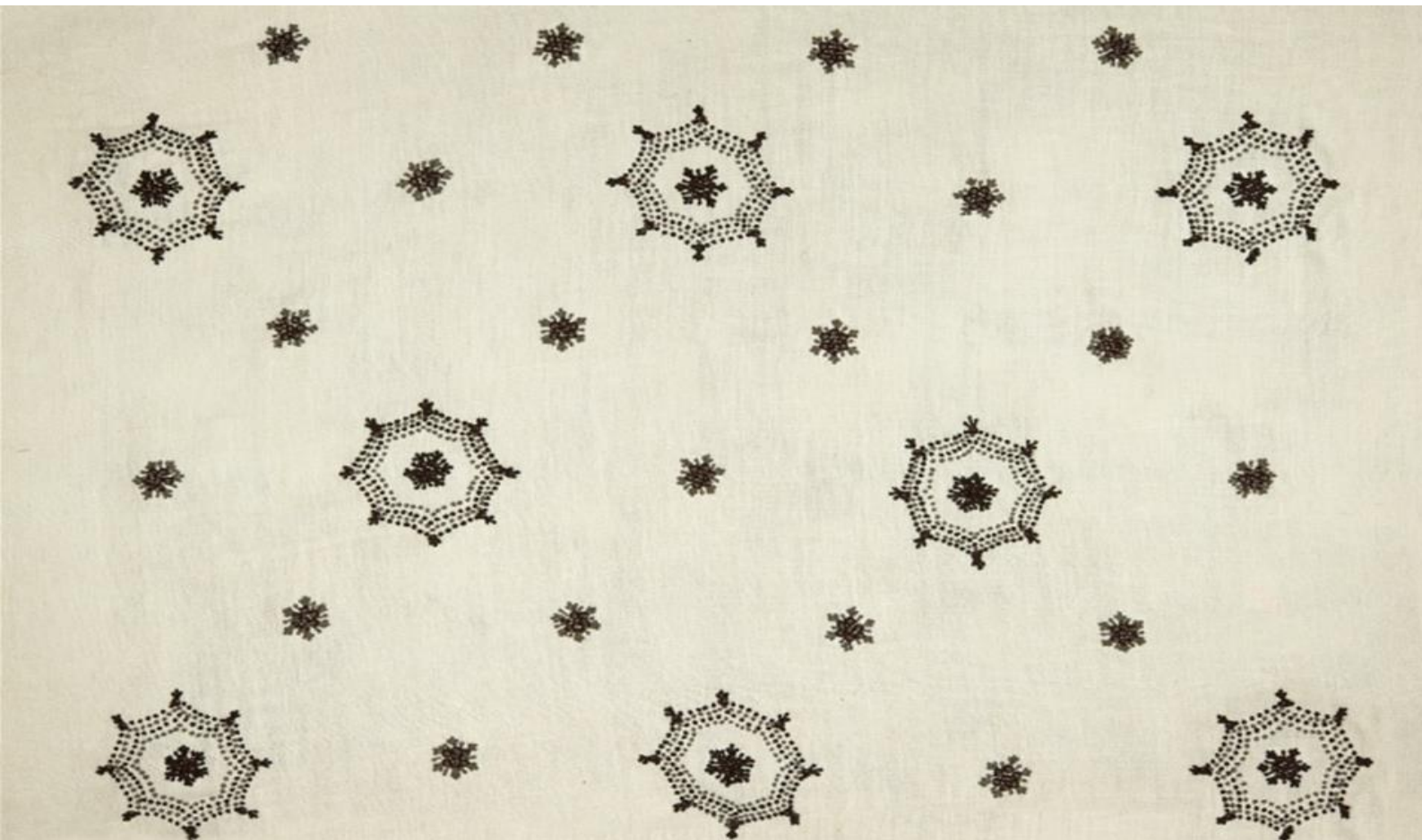


*fine*



## NANNI 010

Heavy linen with elaborate, hand-worked wooden bead embroidery; suitable for drapery

Available colours:

Collection:	MD Alpine Chic
Material:	100 % LI (Stickgarn   Embroid. yarn: 100 % CO) Perlen   Beads: 100 % PAN
Color variations:	2
Total width:	137,00 cm
Rapport width:	53,50 cm
Rapport height:	65,00 cm

Care instructions:



Special notes:

Elaborate hand-embroidered workmanship; variations in the pattern repeat may occur.

Sewing according to repeat in half offset is possible.



Nanni 011