



## ROMY 069

Upholstery fabric with stripe design, woven from a chenille yarn with a long pile, a bouclé yarn and a melangé yarn

|             |   |
|-------------|---|
| Collection: | Bob   |
| Material:   | 53 % PAN   26 % PES   13 % CO   7 % LI   1 % CV |

|                   |   |
|-------------------|---|
| Color variations: | 7 |
|-------------------|---|

|              |           |
|--------------|-----------|
| Total width: | 139,00 cm |
|--------------|-----------|

|                 |          |
|-----------------|----------|
| Rapport height: | 25,70 cm |
|-----------------|----------|

Usage:



Care instructions:



Available colours:



Romy 010



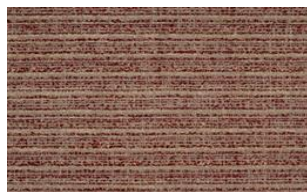
Romy 037



Romy 038



Romy 039



Romy 059



Romy 079

Special notes:

A seat mirror in pile or pile fabrics is purely visual and is not a reason for complaint.

Oekotex Standard 100 certified

Horizontal stripe

---

The illustrations are not color-coded.