

# SCHENNA 314

Decorative, soft loden weave made of flecked wool

Available colours:

|                   |                      |
|-------------------|----------------------|
| Collection:       | Lana                 |
| Material:         | FR 80 % WO / 20 % PA |
| Color variations: | 75                   |
| Total width:      | 140,00 cm            |

Usage:

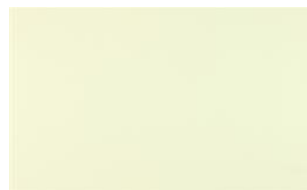


Mark:  
schwer entflammbar

Care instructions:



Fire protection:  
EN 1021 1 & 2  
BS 5852 Source 5



Schenna 100



Schenna 101



Schenna 102



Schenna 103



Schenna 104



Schenna 105

The illustrations are not color-coded.

*fine*



Schenna 106



Schenna 201



Schenna 300



Schenna 301



Schenna 303



Schenna 305



Schenna 306



Schenna 307



Schenna 310



Schenna 311



Schenna 312



Schenna 313



Schenna 400



Schenna 401



Schenna 402



Schenna 403



Schenna 404



Schenna 405



Schenna 408



Schenna 409



Schenna 410



Schenna 411



Schenna 413



Schenna 414



Schenna 415



Schenna 416



Schenna 417



Schenna 418



Schenna 420



Schenna 421



Schenna 422



Schenna 423

*fine*



Schenna 500



Schenna 501



Schenna 502



Schenna 503



Schenna 504



Schenna 506



Schenna 511



Schenna 512



Schenna 601



Schenna 602



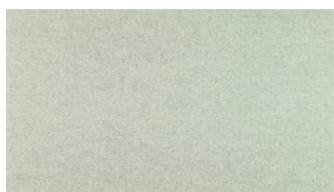
Schenna 603



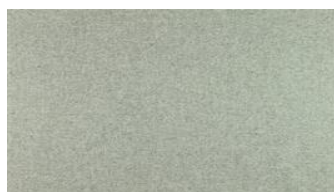
Schenna 700



Schenna 701



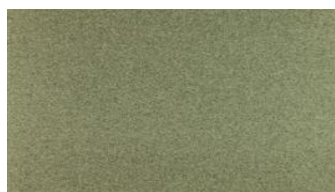
Schenna 702



Schenna 703



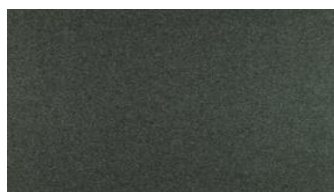
Schenna 704



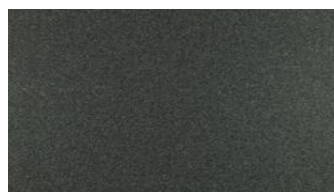
Schenna 705



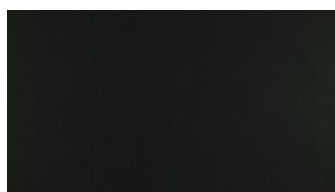
Schenna 706



Schenna 707



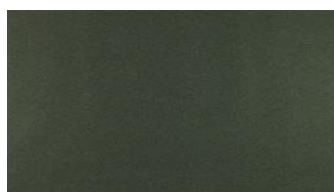
Schenna 708



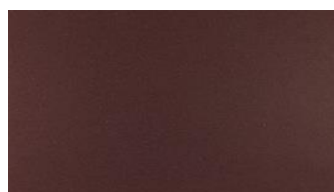
Schenna 709



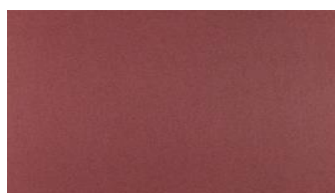
Schenna 712



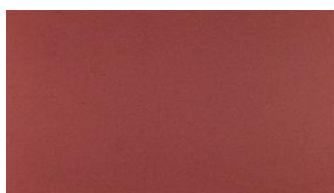
Schenna 713



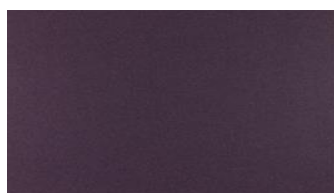
Schenna 801



Schenna 802



Schenna 803



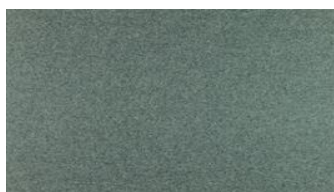
Schenna 804



Schenna 805



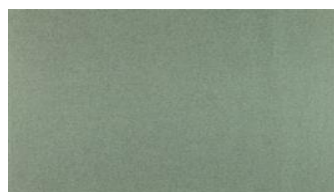
Schenna 808



Schenna 809



Schenna 810



Schenna 811