



SINJE 011

Upholstery fabric, woven as a faux plain from a smooth, two-coloured yarn in a Panama weave, suitable for outdoor use

| | |
|-------------------|-----------|
| Collection: | Aria |
| Material: | 100 % PP |
| Color variations: | 8 |
| Total width: | 140,00 cm |

Usage:

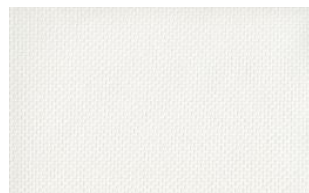


Mark:
Outdoor
waschbar

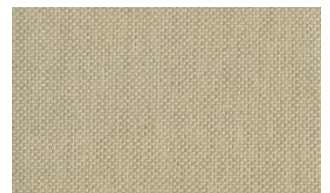
Care instructions:



Available colours:



Sinje 010



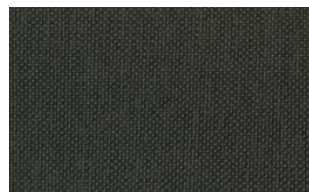
Sinje 012



Sinje 040



Sinje 070



Sinje 071



Sinje 072

Special notes:

Greenguard

Moth-resistant

Antiallergic

Mold resistant

Recyclable

Antibacterial

Mildew-resistant

Colour fast in chlorine and salt water

*Quick drying

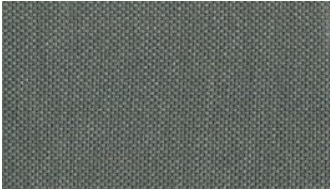
High light fastness

Oekotex Standard 100 certified

Minimum order quantity 1 meter

The illustrations are not color-coded.

fine



Sinje o8o