

SINJE 072

Upholstery fabric, woven as a faux plain from a smooth, two-coloured yarn in a Panama weave, suitable for outdoor use

| | |
|-------------------|-----------|
| Collection: | Aria |
| Material: | 100 % PP |
| Color variations: | 8 |
| Total width: | 140.00 cm |

Usage:



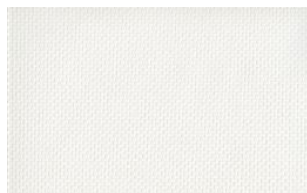
Mark:

Washable
Outdoor

Care instructions:



Available colours:



Sinje 010



Sinje 011



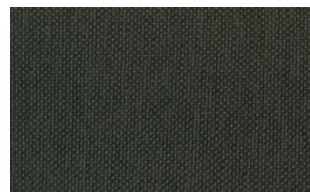
Sinje 012



Sinje 040



Sinje 070



Sinje 071

Special notes:

minimum order quantity 1 meter

Oekotex 100 certified

mildew resistant

colour fast in chlorine and salt water

*quick drying

high lightfastness

anti-bacterial | microbial

recyclable

fungus resistant

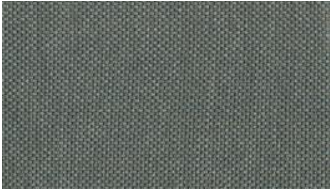
moth resistant

antiallergic

greenguard

The illustrations are not color-coded.

fine



Sinje o8o