



SOFTLY LEAF 010

Chenille with a leaf design and FibreGuard Pro treatment.
(Anti-microbial, washable, mite- and odour-resistant;
moisture-resistant, Ökotex certified);
suitable as upholstery fabric.

| | |
|-------------------|-----------|
| Collection: | Softly |
| Material: | 100 % PES |
| Color variations: | 7 |
| Total width: | 140.00 cm |
| Rapport width: | 70,0 cm |
| Rapport height: | 94,0 cm |

Usage:



Mark:

Washable

Stain protection

Care instructions:



Available colours:



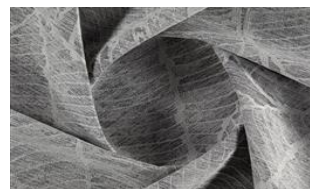
Softly Leaf 030



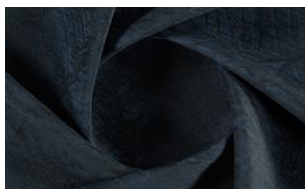
Softly Leaf 031



Softly Leaf 032



Softly Leaf 070



Softly Leaf 080



Softly Leaf 081

Special notes:

Oekotex 100 certified

*Fibre Guard Pro

Shiny Patches in pile fabrics are merely optical and not a reason for complaint.

The illustrations are not color-coded.